

The dataRetrieval R package

By Laura A. De Cicco and Robert M. Hirsch

November 12, 2014

Contents

1	Introduction to dataRetrieval	3
2	USGS Web Retrievals	5
	2.1 Site Information.....	6
	2.1.1 readNWISsite	6
	2.1.2 whatNWISdata	7
	2.2 Parameter Information	8
	2.3 Daily Values.....	8
	2.4 Unit Values	12
	2.5 Water Quality Values	14
	2.6 Groundwater level data	15
	2.7 Peak flow data	16
	2.8 Rating curve data	16
	2.9 Surface-water measurement data	17
	2.10 URL Construction.....	17
3	Water Quality Portal Web Retrievals	18
4	Generalized Retrievals	18
	4.0.1 NWIS sites	18
	4.0.2 NWIS data.....	19
	4.0.3 Water Quality Portal sites.....	20
	4.0.4 Water Quality Portal data.....	20
5	Dataframe Metadata	21
6	Getting Started in R	22
	6.1 New to R?.....	22
	6.2 R User: Installing dataRetrieval	24
7	Creating tables in Microsoft® software from R	24
8	Disclaimer	26

Figures

Figure 1	Temperature and discharge plot of Choptank River in 2012.....	11
Figure 2	A simple R help file.....	22
Figure 3	A simple table produced in Microsoft® Excel.....	25

Tables

Table 1 dataRetrieval functions 4

Table 2 Common USGS Parameter Codes 5

Table 3 Commonly used USGS Stat Codes 6

Table 4 Reformatted version of output from `whatNWISdata` function for the Choptank River
near Greensboro, MD, and from Seneca Creek at Dawsonville, MD from the daily values service
[Some columns deleted for space considerations] 7

Table 5 NWIS general data calls 19

1 Introduction to dataRetrieval

The dataRetrieval package was created to simplify the process of loading hydrologic data into the R environment. It is designed to retrieve the major data types of U.S. Geological Survey (USGS) hydrologic data that are available on the Web, as well as data from the Water Quality Portal (WQP), which currently houses water quality data from the Environmental Protection Agency (EPA), U.S. Department of Agriculture (USDA), and USGS. Direct USGS data is obtained from a service called the National Water Information System (NWIS). A lot of useful information about NWIS can be obtained here:

<http://help.waterdata.usgs.gov/>

For information on getting started in R and installing the package, see (6): Getting Started. Any use of trade, firm, or product names is for descriptive purposes only and does not imply endorsement by the U.S. Government.

A quick workflow for USGS dataRetrieval functions:

```
library(dataRetrieval)
# Choptank River near Greensboro, MD
siteNumber <- "01491000"
ChoptankInfo <- readNWISsite(siteNumber)
parameterCd <- "00060"

#Raw daily data:
rawDailyData <- readNWISdv(siteNumber,parameterCd,
                           "1980-01-01", "2010-01-01")

# Sample data Nitrate:
parameterCd <- "00618"
qwData <- readNWISqw(siteNumber,parameterCd,
                    "1980-01-01", "2010-01-01")

pCode <- readNWISpCode(parameterCd)
```

USGS data are made available through the National Water Information System (NWIS).

Table 1 describes the functions available in the dataRetrieval package.

Table 1. dataRetrieval functions

Function Name	Arguments	Description
readNWISdata	... service	NWIS data using user-specified queries
readNWISdv	siteNumber parameterCd startDate endDate statCd	NWIS daily data
readNWISqw	siteNumber parameterCd startDate endDate expanded	NWIS water quality data
readNWISuv	siteNumber parameterCd startDate endDate	NWIS water quality data
readNWISrating	siteNumber type	NWIS rating table for active streamgage
readNWISmeas	siteNumber startDate endDate	NWIS surface-water measurements
readNWISpeak	siteNumber startDate endDate	NWIS peak flow data
readNWISgw1	siteNumber startDate endDate	NWIS groundwater level measurements
readNWISpCode	parameterCd	NWIS parameter code information
readNWISsite	siteNumber	NWIS site information
whatNWISsites	...	NWIS site search using user-specified queries
whatNWISdata	siteNumber service	NWIS data availability, including period of record and count
readWQPdata	...	WQP data using user-specified queries
readWQPqw	siteNumber parameterCd (or characteristic name) startDate endDate	WQP data
whatWQPsites	...	WQP site search using user-specified queries

2 USGS Web Retrievals

In this section, examples of Web retrievals document how to get raw data. This data includes site information (2.1), measured parameter information (2.2), historical daily values (2.3), unit values (which include real-time data but can also include other sensor data stored at regular time intervals) (2.4), water quality data (2.5), groundwater level data (2.6), peak flow data (2.7), rating curve data (2.8), and surface-water measurement data (2.9). We will mainly use the Choptank River near Greensboro, MD as an example. Daily discharge data are available as far back as 1948. Additionally, nitrate has been measured since 1964.

The USGS organizes hydrologic data in a standard structure. Streamgages are located throughout the United States, and each streamgage has a unique ID (referred in this document and throughout the dataRetrieval package as “siteNumber”). Often (but not always), these ID’s are 8 digits. The first step to finding data is discovering this siteNumber. There are many ways to do this, one is the National Water Information System: Mapper <http://maps.waterdata.usgs.gov/mapper/index.html>.

Once the siteNumber is known, the next required input for USGS data retrievals is the “parameter code”. This is a 5-digit code that specifies the measured parameter being requested. For example, parameter code 00631 represents “Nitrate plus nitrite, water, filtered, milligrams per liter as nitrogen”, with units of “mg/l as N”.

A useful place to discover USGS codes information, along with other NWIS information is:

<http://help.waterdata.usgs.gov/codes-and-parameters>

Not every station will measure all parameters. A short list of commonly measured parameters is shown in Table 2.

Table 2. Common USGS Parameter Codes

pCode	shortName
00060	Discharge [ft ³ /s]
00065	Gage height [ft]
00010	Temperature [C]
00045	Precipitation [in]
00400	pH

A complete list (as of November 7, 2014) is available as data attached to the package. It is accessed by the following:

```
library(dataRetrieval)
parameterCdFile <- parameterCdFile
names(parameterCdFile)

[1] "parameter_cd"          "parameter_group_nm"
[3] "parameter_nm"          "casrn"
[5] "srsname"               "parameter_units"
```

Two output columns that may not be obvious are “srsname” and “casrn”. Srsname stands for “Substance Registry Services”. More information on the srs name can be found here:

http://ofmpub.epa.gov/sor_internet/registry/substreg/home/overview/home.do

Casrn stands for “Chemical Abstracts Service (CAS) Registry Number”. More information on CAS can be found here:

<http://www.cas.org/content/chemical-substances/faqs>

For unit values data (sensor data measured at regular time intervals such as 15 minutes or hourly), knowing the parameter code and siteNumber is enough to make a request for data. For most variables that are measured on a continuous basis, the USGS also stores the historical data as daily values. These daily values are statistical summaries of the continuous data, e.g. maximum, minimum, mean, or median. The different statistics are specified by a 5-digit statistics code. A complete list of statistic codes can be found here:

http://help.waterdata.usgs.gov/code/stat_cd_nm_query?stat_nm_cd=%25&fmt=html&inline=true

Some common codes are shown in Table 3.

Table 3. Commonly used USGS Stat Codes

StatCode	shortName
00001	Maximum
00002	Minimum
00003	Mean
00008	Median

Examples for using these siteNumbers, parameter codes, and stat codes will be presented in subsequent sections.

2.1 Site Information

2.1.1 readNWISsite

Use the `readNWISsite` function to obtain all of the information available for a particular USGS site (or sites) such as full station name, drainage area, latitude, and longitude. `readNWISsite` can also access information about multiple sites with a vector input.

```
siteNumbers <- c("01491000", "01645000")
siteINFO <- readNWISsite(siteNumbers)
```

A specific example piece of information can be retrieved, in this case a station name, as follows:

```
siteINFO$station_nm
[1] "CHOPTANK RIVER NEAR GREENSBORO, MD"
```

```
[2] "SENECA CREEK AT DAWSONVILLE, MD"
```

Site information is obtained from <http://waterservices.usgs.gov/rest/Site-Test-Tool.html>

2.1.2 whatNWISdata

To discover what data is available for a particular USGS site, including measured parameters, period of record, and number of samples (count), use the `whatNWISdata` function. It is possible to limit the retrieval information to a subset of services. The possible choices for services are: "dv" (daily values), "uv", "rt", or "iv" (unit values), "qw" (water-quality), "sv" (sites visits), "pk" (peak measurements), "gw" (groundwater levels), "ad" (sites included in USGS Annual Water Data Reports External Link), "aw" (sites monitored by the USGS Active Groundwater Level Network External Link), and "id" (historical instantaneous values).

In the following example, we limit the retrieved Choptank data to only daily data. The default for "service" is "all", which returns all of the available data for that site. Likewise, there are arguments for parameter code (`parameterCd`) and statistic code (`statCd`) to filter the results. The default for both is to return all possible values ("all"). The returned "count_nu" for "uv" data is the count of days with returned data, not the actual count of returned values.

```
# Continuing from the previous example:
# This pulls out just the daily, mean data:

dailyDataAvailable <- whatNWISdata(siteNumbers,
                                   service="dv", statCd="00003")
```

Table 4. Reformatted version of output from `whatNWISdata` function for the Choptank River near Greensboro, MD, and from Seneca Creek at Dawsonville, MD from the daily values service [Some columns deleted for space considerations]

siteNumber	srsname	startDate	endDate	count	units
01491000	Temperature, water	2010-10-01	2012-05-09	529	deg C
01645000	Stream flow, mean. daily	1930-09-26	2014-11-11	30728	ft ³ /s
01491000	Stream flow, mean. daily	1948-01-01	2014-11-11	24422	ft ³ /s
01491000	Specific conductance	2010-10-01	2012-05-09	527	μS/cm @25C
01491000	Suspended sediment concentration (SSC)	1980-10-01	1991-09-30	3651	mg/l
01491000	Suspended sediment discharge	1980-10-01	1991-09-30	3652	tons/day

See Section 7 for instructions on converting an R dataframe to a table in Microsoft® software Excel or Word to display a data availability table similar to Table 4. Excel, Microsoft, PowerPoint, Windows, and Word are registered trademarks of Microsoft Corporation in the United States and other countries.

2.2 Parameter Information

To obtain all of the available information concerning a measured parameter (or multiple parameters), use the `readNWISpCode` function:

```
# Using defaults:
parameterCd <- "00618"
parameterINFO <- readNWISpCode(parameterCd)
colnames(parameterINFO)

[1] "parameter_cd"          "parameter_group_nm"
[3] "parameter_nm"          "casrn"
[5] "srsname"               "parameter_units"
```

A specific example piece of information, in this case parameter name, can be obtained as follows:

```
parameterINFO$parameter_nm

[1] "Nitrate, water, filtered, milligrams per liter as nitrogen"
```

Parameter information can be obtained from:

<http://help.waterdata.usgs.gov/codes-and-parameters/parameters>

2.3 Daily Values

To obtain daily records of USGS data, use the `readNWISdv` function. The arguments for this function are `siteNumber`, `parameterCd`, `startDate`, `endDate`, and `statCd` (defaults to "00003"). If you want to use the default values, you do not need to list them in the function call.

The dates (start and end) must be in the format "YYYY-MM-DD" (note: the user must include the quotes). Setting the start date to "" (no space) will prompt the program to ask for the earliest date, and setting the end date to "" (no space) will prompt for the latest available date.

```
# Continuing with our Choptank River example
siteNumber <- "01491000"
parameterCd <- "00060" # Discharge
startDate <- "2009-10-01"
endDate <- "2012-09-30"

discharge <- readNWISdv(siteNumber,
                        parameterCd, startDate, endDate)
names(discharge)

[1] "dateTime"          "site_no"          "agency"
[4] "tz_cd"              "X_00060_00003_cd" "X_00060_00003"
```


The column "datetime" in the returned dataframe is automatically imported as a variable of class "Date" in R. Each requested parameter has a value and remark code column. The names of these columns depend on the requested parameter and stat code combinations. USGS daily value qualification codes are often "A" (approved for publication) or "P" (provisional data subject to revision). A more complete list of daily value qualification codes can be found here:

http://help.waterdata.usgs.gov/codes-and-parameters/daily-value-qualification-code-dv_rmk_cd

Another example that doesn't use the defaults would be a request for mean and maximum daily temperature and discharge in early 2012:

```
parameterCd <- c("00010", "00060") # Temperature and discharge
statCd <- c("00001", "00003") # Mean and maximum
startDate <- "2012-01-01"
endDate <- "2012-05-01"

temperatureAndFlow <- readNWISdv(siteNumber, parameterCd,
                                startDate, endDate, statCd=statCd)
```

Daily data is pulled from <http://waterservices.usgs.gov/rest/DV-Test-Tool.html>.

The column names can be shortened and simplified using the `renameNWISColumns` function. This is not necessary, but may streamline subsequent data analysis and presentation.

```
names(temperatureAndFlow)

[1] "dateTime"      "site_no"
[3] "agency"        "tz_cd"
[5] "X_00010_00001_cd" "X_00010_00001"
[7] "X_00010_00003_cd" "X_00010_00003"
[9] "X_00060_00003_cd" "X_00060_00003"

temperatureAndFlow <- renameNWISColumns(temperatureAndFlow)
names(temperatureAndFlow)

[1] "dateTime"      "site_no"      "agency"
[4] "tz_cd"         "Wtemp_Max_cd" "Wtemp_Max"
[7] "Wtemp_cd"      "Wtemp"        "Flow_cd"
[10] "Flow"
```

An example of plotting the above data (Figure 1):

```
par(mar=c(5,5,5,5)) #sets the size of the plot window

with(temperatureAndFlow, plot(
  dateTime, Wtemp_Max,
  xlab="Date", ylab="Max Temperature [C]"
))
par(new=TRUE)
```

```

with(temperatureAndFlow, plot(
  dateTime, Flow,
  col="red", type="l", xaxt="n", yaxt="n", xlab="", ylab="", axes=FALSE
))
axis(4, col="red", col.axis="red")
mtext(expression(paste("Mean Discharge [ft"^3, "/s]",
                        sep="")), side=4, line=3, col="red")
title(paste(siteINFO$station.nm[1], "2012", sep=" "))
legend("topleft", c("Max Temperature", "Mean Discharge"),
      col=c("black", "red"), lty=c(NA, 1), pch=c(1, NA))

```

There are occasions where NWIS values are not reported as numbers, instead there might be text describing a certain event such as “Ice.” Any value that cannot be converted to a number will be reported as NA in this package (not including remark code columns).

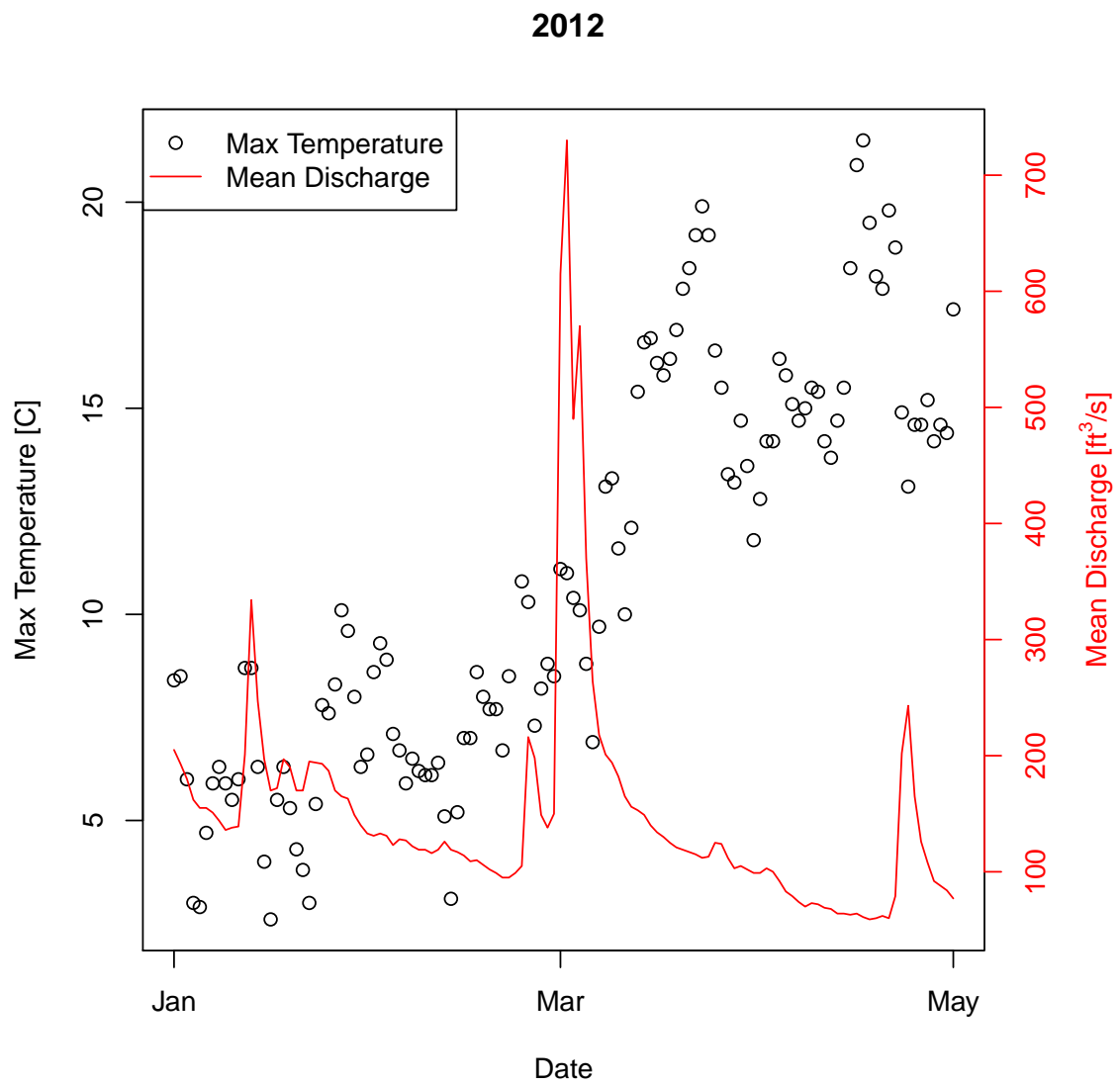


Figure 1. Temperature and discharge plot of Choptank River in 2012.

2.4 Unit Values

Any data collected at regular time intervals (such as 15-minute or hourly) are known as “unit values.” Many of these are delivered on a real time basis and very recent data (even less than an hour old in many cases) are available through the function `readNWISuv`. Some of these unit values are available for many years, and some are only available for a recent time period such as 120 days. Here is an example of a retrieval of such data.

```
parameterCd <- "00060" # Discharge
startDate <- "2012-05-12"
endDate <- "2012-05-13"
dischargeUnit <- readNWISuv(siteNumber, parameterCd,
                             startDate, endDate)
```

The retrieval produces a data frame that contains 96 rows (one for every 15 minute period in the day). They include all data collected from the `startDate` through the `endDate` (starting and ending with midnight locally-collected time). The `dateTime` column is converted to “UTC” (Coordinated Universal Time), so midnight EST will be 5 hours earlier in the `dateTime` column (the previous day, at 7pm).

```
head(dischargeUnit)
```

	dateTime	site_no	agency	tz_cd
1	2012-05-11 19:00:00	01491000	USGS	EST
2	2012-05-11 19:15:00	01491000	USGS	EST
3	2012-05-11 19:30:00	01491000	USGS	EST
4	2012-05-11 19:45:00	01491000	USGS	EST
5	2012-05-11 20:00:00	01491000	USGS	EST
6	2012-05-11 20:15:00	01491000	USGS	EST

	X_00060_00011_cd	X_00060_00011
1	A	83
2	A	83
3	A	83
4	A	83
5	A	85
6	A	83

To override the UTC timezone, specify a valid timezone in the `tz` argument. Default is "", which will keep the `dateTime` column in UTC. Other valid timezones are:

```
America/New_York
America/Chicago
America/Denver
America/Los_Angeles
America/Anchorage
America/Honolulu
America/Jamaica
America/Managua
```

America/Phoenix
America/Metlakatla

Data are retrieved from <http://waterservices.usgs.gov/rest/IV-Test-Tool.html>. There are occasions where NWIS values are not reported as numbers, instead a common example is “Ice.” Any value that cannot be converted to a number will be reported as NA in this package.

2.5 Water Quality Values

To get USGS water quality data from water samples collected at the streamgage or other monitoring site (as distinct from unit values collected through some type of automatic monitor) we can use the function `readNWISqw`, with the input arguments: `siteNumber`, `parameterCd`, `startDate`, and `endDate` and `readNWISdv`). Additionally, the argument "expanded" is a logical input that allows the user to choose between a simple return of datetimes/qualifier/values (`expanded=FALSE`), or a more complete and verbose output (`expanded=TRUE`). Expanded = TRUE includes such columns as remark codes, value qualifying text, and detection level for each parameter code.

There also includes an argument "reshape", that converts the expanded dataset to a "wide" format.

```
# Dissolved Nitrate parameter codes:
parameterCd <- c("00618", "71851")
startDate <- "1985-10-01"
endDate <- "2012-09-30"

dissolvedNitrateLong <- readNWISqw(siteNumber, parameterCd,
                                   startDate, endDate, expanded=TRUE, reshape=FALSE)
names(dissolvedNitrateLong)

[1] "agency_cd"
[2] "site_no"
[3] "sample_dt"
[4] "sample_tm"
[5] "sample_end_dt"
[6] "sample_end_tm"
[7] "sample_start_time_datum_cd"
[8] "tm_datum_rlbty_cd"
[9] "coll_ent_cd"
[10] "medium_cd"
[11] "tu_id"
[12] "body_part_id"
[13] "parm_cd"
[14] "remark_cd"
[15] "result_va"
[16] "val_qual_tx"
[17] "meth_cd"
[18] "dqi_cd"
[19] "rpt_lev_va"
[20] "rpt_lev_cd"
[21] "lab_std_va"
[22] "anl_ent_cd"
[23] "startDateTime"
```

```

dissolvedNitrateWide <- readNWISqw(siteNumber, parameterCd,
  startDate, endDate, expanded=TRUE, reshape=TRUE)
names(dissolvedNitrateWide)

[1] "agency_cd"
[2] "site_no"
[3] "sample_dt"
[4] "sample_tm"
[5] "sample_end_dt"
[6] "sample_end_tm"
[7] "sample_start_time_datum_cd"
[8] "tm_datum_rlbty_cd"
[9] "startDateTime"
[10] "coll_ent_cd_00618"
[11] "medium_cd_00618"
[12] "tu_id_00618"
[13] "body_part_id_00618"
[14] "remark_cd_00618"
[15] "result_va_00618"
[16] "val_qual_tx_00618"
[17] "meth_cd_00618"
[18] "dqi_cd_00618"
[19] "rpt_lev_va_00618"
[20] "rpt_lev_cd_00618"
[21] "lab_std_va_00618"
[22] "anl_ent_cd_00618"
[23] "coll_ent_cd_71851"
[24] "medium_cd_71851"
[25] "tu_id_71851"
[26] "body_part_id_71851"
[27] "remark_cd_71851"
[28] "result_va_71851"
[29] "val_qual_tx_71851"
[30] "meth_cd_71851"
[31] "dqi_cd_71851"
[32] "rpt_lev_va_71851"
[33] "rpt_lev_cd_71851"
[34] "lab_std_va_71851"
[35] "anl_ent_cd_71851"

```

2.6 Groundwater level data

Groundwater level measurements can be obtained with the `readNWISgw1` function.

```

siteNumber <- "434400121275801"
groundWater <- readNWISgw1(siteNumber)

Warning in FUN(X[[4L]], ...): NAs introduced by coercion
Warning in FUN(X[[4L]], ...): NAs introduced by coercion

names(groundWater)

[1] "dateTime"          "site_no"
[3] "agency"            "tz_cd"
[5] "dateTimeAccuracyCd" "censorCode"
[7] "sourceCode"        "X_72019_00011_cd"
[9] "X_72019_00011"

```

2.7 Peak flow data

Peak flow data are instantaneous discharge or stage data that record the maximum values of these variables during a flood event. They include the annual peak flood event but can also include records of other peaks that are lower than the annual maximum. Peak discharge measurements can be obtained with the `readNWISpeak` function.

```

siteNumber <- '01594440'
peakData <- readNWISpeak(siteNumber)

names(peakData)

[1] "agency_cd"      "site_no"      "peak_dt"
[4] "peak_tm"        "peak_va"      "peak_cd"
[7] "gage_ht"        "gage_ht_cd"   "year_last_pk"
[10] "ag_dt"          "ag_tm"        "ag_gage_ht"
[13] "ag_gage_ht_cd"

```

2.8 Rating curve data

Rating curves are the calibration curves that are used to convert measurements of stage to discharge. Because of changing hydrologic conditions these rating curves change over time.

Rating curves can be obtained with the `readNWISrating` function.

```

ratingData <- readNWISrating(siteNumber, "base")
attr(ratingData, "RATING")

[1] "ID=19.0"          "TYPE=STGQ"

```



```
[3] "NAME=stage-discharge" "AGING=W"
[5] "REMARKS=" "EXPANSION=logarithmic"
[7] "OFFSET1=0.2000000E+01"
```

```
names(ratingData)
```

```
[1] "INDEP" "DEP" "STOR"
```

2.9 Surface-water measurement data

These data are the discrete measurements of discharge that are made for the purpose of developing or revising the rating curve.

Surface-water measurement data can be obtained with the `readNWISmeas` function.

```
surfaceData <- readNWISmeas(siteNumber)
```

```
names(surfaceData)
```

```
[1] "agency_cd" "site_no"
[3] "measurement_nu" "measurement_dt"
[5] "tz_cd" "q_meas_used_fg"
[7] "party_nm" "site_visit_coll_agency_cd"
[9] "gage_height_va" "discharge_va"
[11] "current_rating_nu" "shift_adj_va"
[13] "diff_from_rating_pc" "measured_rating_diff"
[15] "gage_va_change" "gage_va_time"
[17] "control_type_cd" "discharge_cd"
```

2.10 URL Construction

There may be times when you might be interested in seeing the URL (Web address) that was used to obtain the raw data. The `constructNWISURL` function returns the URL. In addition to input variables that have been described, there is a new argument `"service"`. The service argument can be `"dv"` (daily values), `"uv"` (unit values), `"qw"` (NWIS water quality values), or `"wqp"` (general Water Quality Portal values).

```
# Dissolved Nitrate parameter codes:
pCode <- c("00618", "71851")
startDate <- "1964-06-11"
endDate <- "2012-12-18"
url_qw <- constructNWISURL(siteNumber, pCode, startDate, endDate, "qw")
url_dv <- constructNWISURL(siteNumber, "00060", startDate, endDate,
                           "dv", statCd="00003")
```

```
url_uv <- constructNWISURL(siteNumber, "00060", startDate, endDate, "uv")
```

3 Water Quality Portal Web Retrievals

There are additional water quality data sets available from the Water Quality Data Portal (<http://www.waterqualitydata.us/>). These data sets can be housed in either the STORET database (data from EPA), NWIS database (data from USGS), STEWARDS database (data from USDA), and additional databases are slated to be included in the future. Because only USGS uses parameter codes, a "characteristic name" must be supplied. The `readWQPqw` function can take either a USGS parameter code, or a more general characteristic name in the `parameterCd` input argument. The Water Quality Data Portal includes data discovery tools and information on characteristic names. The following example retrieves specific conductance from a DNR site in Wisconsin.

```
specificCond <- readWQPqw('WIDNR_WQX-10032762',  
  'Specific conductance', '2011-05-01', '2011-09-30')
```

A tool for finding NWIS characteristic names can be found at: <http://www.waterqualitydata.us/public-srsnames.jsp>

4 Generalized Retrievals

The previous examples all took specific input arguments: `siteNumber`, `parameterCd` (or characteristic name), `startDate`, `endDate`, etc. However, the Web services that supply the data can accept a wide variety of additional arguments.

4.0.1 NWIS sites

The function `whatNWISsites` can be used to discover NWIS sites based on any query that the NWIS Site Service offers. This is done by using the `"..."` argument, which allows the user to use any arbitrary input argument. We can then use the service here:

<http://waterservices.usgs.gov/rest/Site-Test-Tool.html>

to discover many options for searching for NWIS sites. For example, you may want to search for sites in a lat/lon bounding box, or only sites tidal streams, or sites with water quality samples, sites above a certain altitude, etc. The results of this site query generate a URL. For example, the tool provided a search within a specified bounding box, for sites that have daily discharge (parameter code = 00060) and temperature (parameter code = 00010). The generated URL is:

<http://waterservices.usgs.gov/nwis/site/?format=rdb&bBox=-83.0,36.5,-81.0,38.5¶meterCd=00010,00060&hasDataTypeCd=dv>

The following dataRetrieval code can be used to get those sites:

```
sites <- whatNWISsites(bBox="-83.0,36.5,-81.0,38.5",
                      parameterCd="00010,00060",
                      hasDataTypeCd="dv")

names(sites)

[1] "agency_cd"      "site_no"        "station_nm"     "site_tp_cd"
[5] "dec_lat_va"     "dec_long_va"    "queryTime"

nrow(sites)

[1] 205
```

4.0.2 NWIS data

For NWIS data, the function `readNWISdata` can be used. The argument listed in the R help file is `"..."` and `"service"` (only for data requests). Table 5 describes the services are available.

Table 5. NWIS general data calls

Service	Description	Reference URL
daily values	dv	http://waterservices.usgs.gov/rest/DV-Test-Tool.html
instantaneous	iv	http://waterservices.usgs.gov/rest/IV-Test-Tool.html
groundwater levels	gwlevels	http://waterservices.usgs.gov/rest/GW-Levels-Test-Tool.html
water quality	qwdata	http://nwis.waterdata.usgs.gov/nwis/qwdata

The `"..."` argument allows the user to create their own queries based on the instructions found in the web links above. The links provide instructions on how to create a URL to request data. Perhaps you want sites only in Wisconsin, with a drainage area less than 50 mi², and the most recent daily discharge data. That request would be done as follows:

```
dischargeWI <- readNWISdata(service="dv",
                           stateCd="WI",
                           parameterCd="00060",
                           drainAreaMin="50",
                           statCd="00003")

names(dischargeWI)

[1] "dateTime"      "site_no"        "agency"
[4] "tz_cd"         "X_00060_00003_cd" "X_00060_00003"

nrow(dischargeWI)

[1] 282
```

4.0.3 Water Quality Portal sites

Just as with NWIS, the Water Quality Portal (WQP) offers a variety of ways to search for sites and request data. The possible Web service arguments for WQP site searches is found here:

http://www.waterqualitydata.us/webservices_documentation.jsp

To discover available sites in the WQP in New Jersey that have measured Chloride, use the function `whatWQPsites`.

```
sitesNJ <- whatWQPsites(statecode="US:34",  
                        characteristicName="Chloride")
```

4.0.4 Water Quality Portal data

Finally, to get data from the WQP using generalized Web service calls, use the function `readWQPdata`. For example, to get all the pH data in Wisconsin:

```
dataPH <- readWQPdata(statecode="US:55",  
                      characteristicName="pH")
```

5 Dataframe Metadata

All dataframes returned from the Web services have some form of associated metadata. This information is included as attributes to the dataframe. All dataframes will have a `url` and `queryTime` attribute. The is the url that was used to obtain the data can be found as follows:

```
attr(dischargeWI, "url")
[1] "http://waterservices.usgs.gov/nwis/dv/?format=waterml&stateCd=WI&parameter"

attr(dischargeWI, "queryTime")
[1] "2014-11-12 12:36:56 CST"
```

Depending on the format that the data was obtained (xml, rdb, etc), there will be additional information embedded in the dataframe as attributes. To discover the available attributes:

```
names(attributes(dischargeWI))

[1] "names"          "row.names"      "class"
[4] "url"            "attributeList"  "siteInfo"
[7] "variableInfo"   "disclaimer"     "queryInfo"
[10] "queryTime"
```

For data obtained from `readNWISuv`, `readNWISdv`, `readNWISgwl` there are two attributes that are particularly useful: `siteInfo` and `variableInfo`.

```
siteInfo <- attr(dischargeWI, "siteInfo")
head(siteInfo)
```

	station_nm	site_no	agency
1	AMNICON RIVER NEAR POPLAR, WI	04025000	USGS
2	APPLE RIVER NEAR SOMERSET, WI	05341500	USGS
3	BAD RIVER AT MELLEN, WI	04026500	USGS
4	BAD RIVER NEAR MELLEN, WI	04026450	USGS
5	BAD RIVER NEAR ODANAH, WI	04027000	USGS
6	BADFISH CREEK NEAR COOKSVILLE, WI	05430150	USGS

	timeZoneOffset	timeZoneAbbreviation	dec_lat_va	dec_lon_va
1	-06:00	CST	46.60411	-91.88908
2	-06:00	CST	45.15750	-92.71639
3	-06:00	CST	46.32495	-90.65991
4	-06:00	CST	46.27056	-90.70722
5	-06:00	CST	46.48661	-90.69630
6	-06:00	CST	42.83334	-89.19678

	srs	siteTypeCd	stateCd	countyCd	hucCd
1	EPSG:4326	ST	55	55031	04010301
2	EPSG:4326	ST	55	55109	07030005
3	EPSG:4326	ST	55	55003	04010302

```

4 EPSG:4326          ST      55      55003 04010302
5 EPSG:4326          ST      55      55003 04010302
6 EPSG:4326          ST      55      55105 07090001

variableInfo <- attr(dischargeWI, "variableInfo")

```

6 Getting Started in R

This section describes the options for downloading and installing the dataRetrieval package.

6.1 New to R?

If you are new to R, you will need to first install the latest version of R, which can be found here: <http://www.r-project.org/>.

At any time, you can get information about any function in R by typing a question mark before the functions name. This will open a file (in RStudio, in the Help window) that describes the function, the required arguments, and provides working examples. This will open a help file similar to Figure 2. To see the raw code for a particular code, type the name of the function, without parentheses.

```
?readNWISpCode
```

```
getNWISpcodeInfo {dataRetrieval}
```

R Documentation

USGS Parameter Data Retrieval

Description

Imports data from NWIS about measured parameter based on user-supplied parameter code. This function gets the data from here: <http://nwis.waterdata.usgs.gov/nwis/pmcodes>

Usage

```
getNWISpcodeInfo (parameterCd)
```

Arguments

`parameterCd` vector of USGS parameter codes. This is usually an 5 digit number.

Value

`parameterData` dataframe with all information from the USGS about the particular parameter (usually code, name, short name, units, and CAS registry numbers)

Examples

```
# These examples require an internet connection to run
paramINFO <- getNWISpcodeInfo(c('01075','00060','00931'))
```

Figure 2. A simple R help file

Additionally, many R packages have vignette files attached (such as this paper). To view the vignette:

```
vignette(dataRetrieval)
```

6.2 R User: Installing dataRetrieval

The following command installs dataRetrieval and subsequent required packages:

```
install.packages("dataRetrieval")
```

After installing the package, you need to open the library each time you re-start R. This is done with the simple command:

```
library(dataRetrieval)
```

7 Creating tables in Microsoft® software from R

There are a few steps that are required in order to create a table in Microsoft® software (Excel, Word, PowerPoint, etc.) from an R dataframe. There are certainly a variety of good methods, one of which is detailed here. The example we will step through here will be to create a table in Microsoft Excel based on the dataframe tableData:

```
availableData <- whatNWISdata(siteNumber, "dv")
dailyData <- availableData["00003" == availableData$stat_cd,]

tableData <- with(dailyData,
  data.frame(
    shortName=srsname,
    Start=begin_date,
    End=end_date,
    Count=count_nu,
    Units=parameter_units)
)
tableData
```

		shortName	Start
1		Stream flow, mean. daily	1977-06-27
2	Suspended sediment concentration (SSC)		1984-10-27
3	Suspended sediment discharge		1984-10-27
	End	Count	Units
1	2014-11-11	13652	ft3/s
2	1991-09-30	2164	mg/l
3	1991-09-30	1799	tons/day

First, save the dataframe as a tab delimited file (you don't want to use comma delimited because there are commas in some of the data elements):

```
write.table(tableData, file="tableData.tsv", sep="\t",
  row.names = FALSE, quote=FALSE)
```


This will save a file in your working directory called `tableData.tsv`. You can see your working directory by typing `getwd()` in the R console. Opening the file in a general-purpose text editor, you should see the following:

```
shortName Start End Count Units
Temperature, water 2010-10-01 2012-06-24 575 deg C
Stream flow, mean. daily 1948-01-01 2013-03-13 23814 ft3/s
Specific conductance 2010-10-01 2012-06-24 551 uS/cm @25C
Suspended sediment concentration (SSC) 1980-10-01 1991-09-30 3651 mg/l
Suspended sediment discharge 1980-10-01 1991-09-30 3652 tons/day
```

Next, follow the steps below to open this file in Excel:

1. Open Excel
2. Click on the File tab
3. Click on the Open option
4. Navigate to the working directory (as shown in the results of `getwd()`)
5. Next to the File name text box, change the dropdown type to All Files (*.*)
6. Double click `tableData.tsv`
7. A text import wizard will open up, in the first window, choose the Delimited radio button if it is not automatically picked, then click on Next.
8. In the second window, click on the Tab delimiter if it is not automatically checked, then click Finished.
9. Use the many formatting tools within Excel to customize the table

From Excel, it is simple to copy and paste the tables in other Microsoft® software. An example using one of the default Excel table formats is here. Additional formatting could be required in Excel, for example converting u to μ .

shortName	Start	End	Count	Units
Temperature, water	10/1/2010	6/24/2012	575	deg C
Stream flow, mean. daily	1/1/1948	3/13/2013	23814	cfs
Specific conductance	10/1/2010	6/24/2012	551	uS/cm @25C
Suspended sediment concentration (SSC)	10/1/1980	9/30/1991	3651	mg/l
Suspended sediment discharge	10/1/1980	9/30/1991	3652	tons/day

Figure 3. A simple table produced in Microsoft® Excel.

8 Disclaimer

This information is preliminary and is subject to revision. It is being provided to meet the need for timely best science. The information is provided on the condition that neither the U.S. Geological Survey nor the U.S. Government may be held liable for any damages resulting from the authorized or unauthorized use of the information.